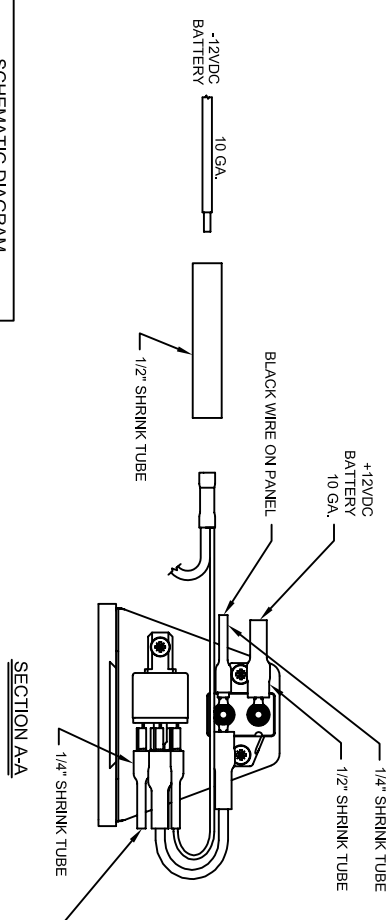
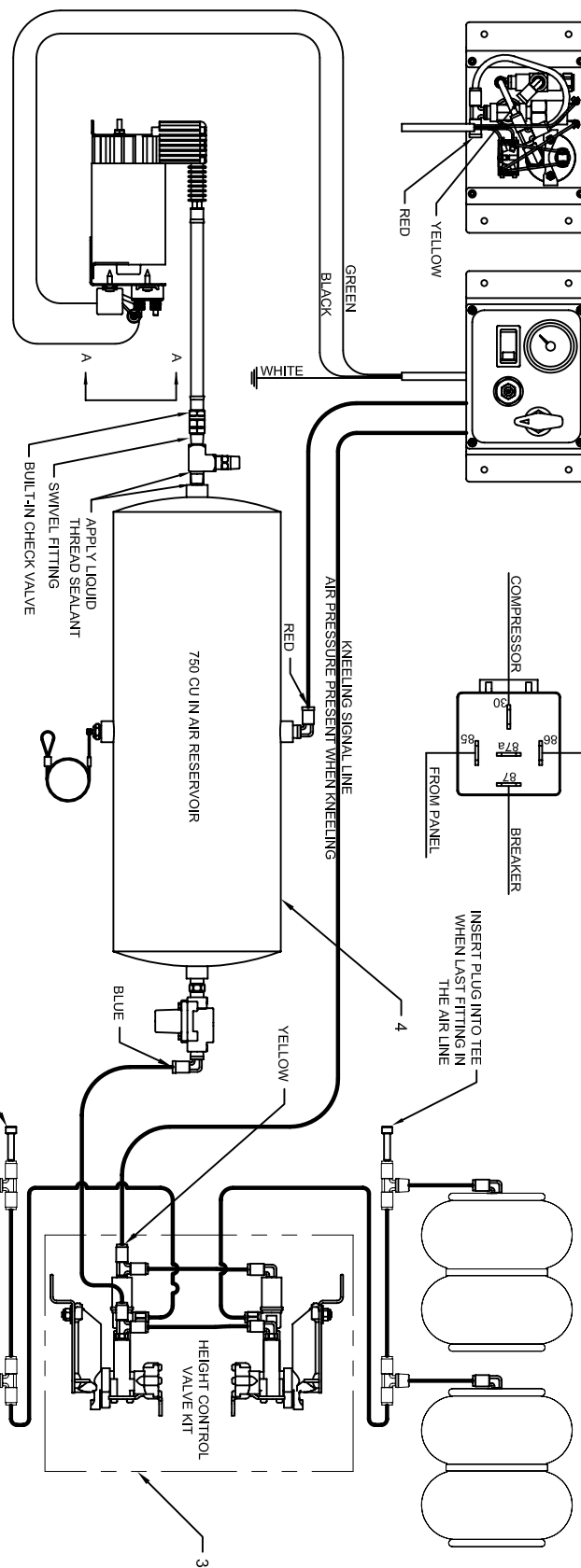
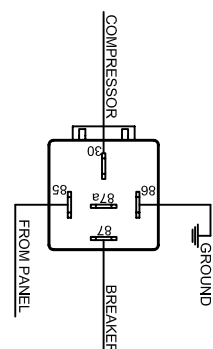
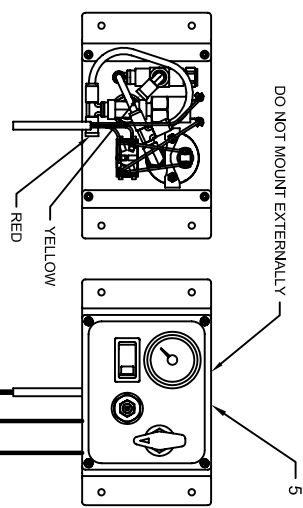
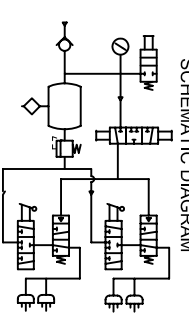


RELAY TERMINAL DESIGNATION



- TO USE SHRINK TUBING:**
1. STRIP INSULATION ON WIRE BACK 3/8".
 2. PLACE SHRINK TUBE OVER WIRE.
 3. INSERT WIRE INTO TERMINAL.
 4. CRIMP WIRE IN TERMINAL.
 5. SLIDE SHRINK TUBE TO COVER THE JOINT BETWEEN THE WIRE & THE TERMINAL.
 6. HEAT THE SHRINK TUBE UNTIL IT SHRINKS AROUND THE CONNECTION SEALING IT FROM MOISTURE.



WIRES TO THE PANEL MUST BE 18 GA. MIN. BATTERY WIRES MUST BE 10 GA. MIN.

BILL OF MATERIAL

ITEM QTY.	PART NO.
1	501880
1	550124
1	AK102-009
1	501881
1	501329

REV.	ENCL. NO.	REV. BY	REV. DATE
03	1488	CHP	04/29/08
02	1389	CHP	11/03/05
01	1383	CHP	10/12/05

ENG'RG. CHANGE NOTICE

SUSPENSION TECHNOLOGY INDUSTRIES
1424 SCALE ST. S.W. CANTON, OHIO 44706
PHONE (888) 877-3058 FAX (330) 458-3066

MATERIAL: -
UNLESS OTHERWISE SPECIFIED, ALL DIMENSIONS ARE IN INCHES

STANDARD TOLERANCES:
X.X ± .06
X.XX ± .03
X.XXX ± .01

SCALE: NTS
RELEASE DATE: 1/17/03
DATE: 9/20/02

THIRD ANGLE PROJECTION

SIZE: B

DRAWING NUMBER: AK100-019V

THIS DRAWING IS THE PROPERTY OF SUSPENSION TECHNOLOGY, IND. AND IS LOANED UPON CONDITION THAT IT IS NOT TO BE REPRODUCED OR COPIED, IN WHOLE OR IN PART, OR USED FOR FURNISHING INFORMATION TO ANY PERSON WITHOUT THE WRITTEN CONSENT OF SUSPENSION TECHNOLOGY, IND. AND ALL COPIES ARE TO BE RETURNED IMMEDIATELY UPON REQUEST.